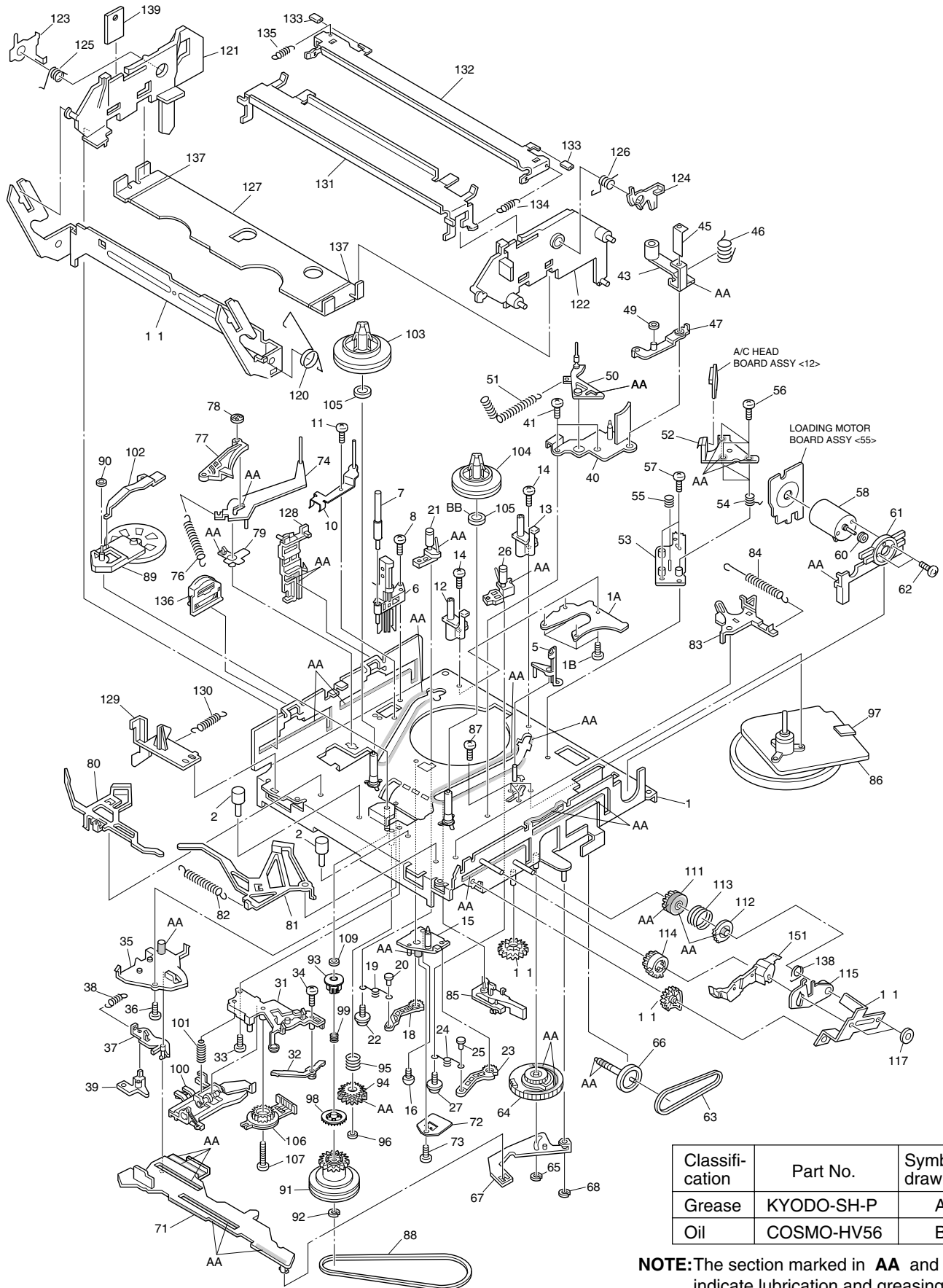


SECTION 5 PARTS LIST

SAFETY PRECAUTION

Parts identified by the  symbol are critical for safety. Replace only with specified part numbers.

5.1 MECHANISM ASSEMBLY <M4>



NOTE: The section marked in **AA** and **BB** indicate lubrication and greasing areas.

#	△ REF No.	PART No.	PART NAME, DESCRIPTION

MECHANISM ASSEMBLY <M4>			
1		LP20884-002F	MAIN DECK ASSY
1A		LP40275-002B	PLATE(SUPPLY)
1B		QYTDST2606Z	SCREW,X4
2		PQ46302-1-3	ADJUST PIN
5		LP30492-002B	GIDE POLE GUARD
6		NAH0001-001	FULL ERASE HEAD
7		LP40098-001B	GUIDE POLE(SUPPLY)
8		QYTDST2608Z	SCREW,FE HEAD
10		LP40637-002A	TENSION STUD BASE ASSY
11		QYTDST2606Z	SCREW
12		LP40096-001B	UV CATCHER(SUPPLY)
13		LP40536-001A	UV CATCHER ASSY(TAKE UP)
14		QYTPST2606Z	SCREW,X2 UV CATCHER
15		LP30223-003C	LOADING ARM GEAR SHAFT
16		QYTDST2606Z	SCREW
18		LP30224-001B	LOADING ARM GEAR(SUPPLY)
19		LP40099-001A	TORSION ARM
20		LP40100-001A	PIN
21		LP40101-007A	POLE BASE ASSY(SUPPLY)
22		QYSPSTG2606Z	SCREW
23		LP40103-002B	LOADING ARM GEAR(TAKE UP)
24		LP40099-001A	TORSION ARM
25		LP40100-001A	PIN
26		LP40104-007A	POLE BASE ASSY(TAKE UP)
27		QYSPSTG2606Z	SCREW
31		LP20233-004B	ROTARY ENCODER GUIDE
32		LP30499-001C	BRAKE LEVER
33		QYTPST2606Z	SCREW
34		QYTPST2608Z	SCREW
35		LP30226-004E	CONTROL PLATE GUIDE
36		QYTPST2605Z	SCREW
37		LP30249-003B	TAKE UP LEVER
38		LP30003-006A	TENSION SPRING
39		LP40119-002A	T.UP HEAD
40		LP20234-004B	LID GUIDE
41		QYTDST2606Z	SCREW,X2
43		LP40105-003A	PINCH ROLLER ARM ASSY
45		LP40753-001A	PINCH ROLLER SHEET 3
46		LP40148-002A	TORSION SPRING
47		LP40149-001C	PRESS LEVER ASSY
49		LP30017-008A	SPACER,P.LEVER
50		LP40106-002E	GUIDE ARM ASSY
51		LP40134-002A	TENSION SPRING
52		QAH0010-005	AC HEAD
53		LP30228-001C	HEAD BASE
54		LP30004-013A	COMPRESSION SPRING,X3
55		LP40236-001A	COMPRESSION SPRING
56		LP40213-002B	SPECIAL SCREW,X3
57		QYTDST2608Z	SCREW,X2 HEAD BASE
58		QAR0023-001	LOADING MOTOR
60		PQ43546-1-2	MOTOR PULLEY
61		LP30230-003D	MOTOR GUIDE
62		QYTPSP3003Z	SCREW,X2
63		LP30005-003A	BELT,LOADING MOTOR
64		LP20791-002D	CONTROL CAM
65		PQM30017-24	SLIT WASHER
66		LP40120-001A	WORM GEAR
67		LP40107-002A	LINK LEVER ASSY
68		PQM30017-24	SLIT WASHER
71		LP10201-003G	CONTROL PLATE
72		LP40379-001B	CONTROL BRACKET(1)
73		QYTDSF2608M	SCREW

#	△ REF No.	PART No.	PART NAME, DESCRIPTION
74		LP40108-002A	TENSION ARM ASSY
76		LP30003-010A	TENSION SPRING
77		LP40109-003D	TENSION BRAKE ASSY
78		PQ46302-1-3	ADJUST PIN
79		LP30232-002A	TENSION ARM BEARING
80		LP40532-008B	MAIN BRAKE ASSY (SUPPLY)
81		LP40111-006A	MAIN BRAKE ASSY (TAKE UP)
82		LP30003-002A	TENSION SPRING
83		LP40112-001F	SUB BRAKE ASSY(TAKE UP)
84		LP40357-002A	TENSION SPRING
85		LP40461-001A	CAPSTAN BRAKE ASSY
86		QAR0087-005	CAPSTAN MOTOR
87		QYTDSF2606M	SCREW,X3
88		LP30005-007A	BELT,CAPSTAN MOTOR
89		LP40114-012A	IDLER ARM ASSY
90		LP30016-001A	SLIT WASHER
91		LP40459-003D	CLUTCH UNIT
92		PQM30017-47	SLIT WASHER
93		LP30696-002A	CLUTCH GEAR 4
94		LP40442-001A	DIRECT GEAR
95		LP40483-002A	COMPRESSION SPRING
96		LP30016-001A	SLIT WASHER
97		LP30002-097A	SPACER,CAPSTAN MOTOR
98		LP30697-003A	COUPLING GEAR
99		LP40554-002A	COMPRESSION SPRING,C.GEAR1
100		LP40484-001J	CHANGE LEVER ASSY
101		LP40512-002B	COMPRESSION SPRING
102		LP30236-002C	IDLER LEVER
103		LP40420-001A	REEL DISK ASSY(SUPPLY)
104		LP40421-001A	REEL DISK ASSY(TAKE UP)
105		LP30017-015A	SPACER,X2 REEL DISK
106		QSW0554-003	ROTARY ENCODER
107		QYTPST2620Z	SCREW
109		LP30017-019A	SPACER,C.GEAR4
110		LP30237-002B	CASSETTE GEAR
111		LP30239-002G	LIMIT GEAR(1)
112		LP30240-002G	LIMIT GEAR(2)
113		LP40136-001E	TORSION SPRING
114		LP30242-002A	RELAY GEAR
115		LP30339-002E	OPENER GUIDE
116		LP40214-001B	C.H.BRACKET
117		PQM30017-47	SLIT WASHER,X2
118		LP30243-002A	DRIVE GEAR
119		LP20240-001G	DRIVE ARM
120		LP40137-001A	TORSION SPRING
121		LP10081-002P	SIDE HOLDER(L)
122		LP10082-002U	SIDE HOLDER(R)
123		LP30255-006B	LOCK LEVER(L)
124		LP30256-001H	LOCK LEVER(R)
125		LP40168-003A	TORSION SPRING(L)
126		LP40218-001B	TORSION SPRING(R)
127		LP30257-001G	CASSETTE HOLDER
128		LP30244-002G	GUIDE RAIL
129		LP30245-002F	REC SAFETY LEVER
130		LP30003-004A	TENSION SPRING
131		LP20578-001C	TOP GUIDE
132		LP30500-001C	HOLD PLATE
133		LP40450-003A	PAD,X2 HOLD PLATE
134		LP30003-025B	TENSION SPRING(TAKE UP)
135		LP30003-024A	TENSION SPRING(SUPPLY)
136		LP40481-003A	ROLLER CAM ASSY
137		LP30019-014A	PAD,X2 CASSETTE HOLDER
138		LP40545-001A	TORSION SPRING,OPENER GUIDE
139		PQ40919-30	SPACER,EARTH PLATE
151		LP20324-003B	DOOR OPENER

5.2 ELECTRICAL PARTS LIST

#	△ REF No.	PART No.	PART NAME, DESCRIPTION

MAIN BOARD ASSEMBLY <03>			
PW1	LPA10048-52E		MAIN BOARD ASSY
IC1	JCP8017-MSA	IC	
IC201	LC74775-9750	IC	
IC2201	AN3651FBP	IC	
IC2501	LC85405JE	IC	
IC3001	HD6432194A54F	IC(MCU)	
IC3002	S-80728AN-DR-X	IC	
	or S-80828ANUP-W	IC	
IC3003	M24C08-BN6	IC	
	or S-24C08ADP	IC	
	or AT24C08-10PC	IC	
	or X24C08P	IC	
	or 24LC08B/P	IC	
IC3004	TA7291S	IC	
IC3301	M38513M4C56FP	SOP IC(MPU)	
IC3501	TA7291S	IC	
IC3961	TC7W241FU	IC(DIGITAL)	
IC3962	TC7W241FU	IC(DIGITAL)	
IC5301	LA5634-N	IC	
IC6080	BA15218F-XE	IC	
Q1	2SB1218A/QR/-X	TRANSISTOR	
	or 2PA1576/R/-X	TRANSISTOR	
	or 2SA1576A/QR/-X	TRANSISTOR	
Q2	UN521E	TRANSISTOR	
	or PDTC144WU	TRANSISTOR	
	or RN1309	TRANSISTOR	
	or DTC144WU	TRANSISTOR	
Q6	2SB1218A/QR/-X	TRANSISTOR	
	or 2SA1576A/QR/-X	TRANSISTOR	
	or 2PA1576/R/-X	TRANSISTOR	
Q34	2SC4081/S/-X	TRANSISTOR	
Q35	2SC4081/S/-X	TRANSISTOR	
Q36	2SC4081/S/-X	TRANSISTOR	
Q37	2SC4081/S/-X	TRANSISTOR	
Q38	2SD1819A/QRS/-X	TRANSISTOR	
	or 2PC4081/R/-X	TRANSISTOR	
	or 2SC4081/QRS/-X	TRANSISTOR	
Q39	2SB1218A/QR/-X	TRANSISTOR	
	or 2SA1576A/QRS/-X	TRANSISTOR	
	or 2PA1576/R/-X	TRANSISTOR	
Q49	2SC3936/BC/-X	TRANSISTOR	
Q152	2SB1218A/QR/-X	TRANSISTOR	
	or 2SA1576A/QRS/-X	TRANSISTOR	
	or 2PA1576/R/-X	TRANSISTOR	
Q153	2SD1819A/QRS/-X	TRANSISTOR	
	or 2PC4081/R/-X	TRANSISTOR	
	or 2SC4081/QRS/-X	TRANSISTOR	
Q207	2SB1218A/QR/-X	TRANSISTOR	
	or 2SA1576A/QR/-X	TRANSISTOR	
	or 2PA1576/R/-X	TRANSISTOR	
Q208	2SD1819A/QRS/-X	TRANSISTOR	
	or 2PC4081/R/-X	TRANSISTOR	
	or 2SC4081/QRS/-X	TRANSISTOR	
Q2001	2SC4081/QRS/-X	TRANSISTOR	
	or 2PC4081/R/-X	TRANSISTOR	
	or 2SD1819A/QRS/-X	TRANSISTOR	
Q2002	2SC4081/QRS/-X	TRANSISTOR	

#	△ REF No.	PART No.	PART NAME, DESCRIPTION
		or 2SD1819A/QRS/-X	TRANSISTOR
		or 2PC4081/R/-X	TRANSISTOR
Q2003	DTA144WU	TRANSISTOR	
		or PDTA144WU	TRANSISTOR
		or RN2309	TRANSISTOR
		or UN511E	TRANSISTOR
Q2051	2SC4081/QRS/-X	TRANSISTOR	
		or 2PC4081/R/-X	TRANSISTOR
		or 2SD1819A/QRS/-X	TRANSISTOR
Q2052	2SA1576A/QR/-X	TRANSISTOR	
		or 2SB1218A/QR/-X	TRANSISTOR
		or 2PA1576/R/-X	TRANSISTOR
Q2053	DTC144WU	TRANSISTOR	
		or PDTC144WU	TRANSISTOR
		or RN1309	TRANSISTOR
		or UN521E	TRANSISTOR
Q2054	2SA1576A/QR/-X	TRANSISTOR	
		or 2PA1576/R/-X	TRANSISTOR
		or 2SB1218A/QR/-X	TRANSISTOR
Q2055	DTC144WU	TRANSISTOR	
		or PDTC144WU	TRANSISTOR
		or RN1309	TRANSISTOR
		or UN521E	TRANSISTOR
Q2061	2SC4081/QRS/-X	TRANSISTOR	
		or 2SD1819A/QRS/-X	TRANSISTOR
		or 2PC4081/R/-X	TRANSISTOR
Q2062	2SA1576A/QR/-X	TRANSISTOR	
		or 2PA1576/R/-X	TRANSISTOR
		or 2SB1218A/QR/-X	TRANSISTOR
Q2063	DTC144WU	TRANSISTOR	
		or PDTC144WU	TRANSISTOR
		or UN521E	TRANSISTOR
		or RN1309	TRANSISTOR
Q2102	DTC144WU	TRANSISTOR	
		or PDTC144WU	TRANSISTOR
		or RN1309	TRANSISTOR
		or UN521E	TRANSISTOR
Q2151	2SC4081/QRS/-X	TRANSISTOR	
		or 2PC4081/R/-X	TRANSISTOR
		or 2SD1819A/QRS/-X	TRANSISTOR
Q2201	2SC4081/QRS/-X	TRANSISTOR	
		or 2SD1819A/QRS/-X	TRANSISTOR
		or 2PC4081/R/-X	TRANSISTOR
Q2202	2SC4081/QRS/-X	TRANSISTOR	
		or 2PC4081/R/-X	TRANSISTOR
		or 2SD1819A/QRS/-X	TRANSISTOR
Q2203	DTA144WU	TRANSISTOR	
		or PDTA144WU	TRANSISTOR
		or UN511E	TRANSISTOR
		or RN2309	TRANSISTOR
Q2204	DTC144WU	TRANSISTOR	
		or PDTC144WU	TRANSISTOR
		or RN1309	TRANSISTOR
		or UN521E	TRANSISTOR
Q2253	DTC114EU	TRANSISTOR	
		or PDTC114EU	TRANSISTOR
		or UN5211	TRANSISTOR
		or RN1302	TRANSISTOR
Q2258	DTA144WU	TRANSISTOR	
		or RN2309	TRANSISTOR
		or UN511E	TRANSISTOR

#	△ REF No.	PART No.	PART NAME, DESCRIPTION	#	△ REF No.	PART No.	PART NAME, DESCRIPTION
Q2501		2SD1819A/QRS/-X	TRANSISTOR			or RN1302	TRANSISTOR
		or 2PC4081/R/-X	TRANSISTOR			or PDTC114EU	TRANSISTOR
		or 2SC4081/QRS/-X	TRANSISTOR			or DTC114EU	TRANSISTOR
Q2502		UN521E	TRANSISTOR	D16		DA204U	DIODE
		or PDTC144WU	TRANSISTOR	D17		DA204U	DIODE
		or RN1309	TRANSISTOR	D24		DA204U	DIODE
		or DTC144WU	TRANSISTOR	D25		NRSA02J-0R0X	MG RESISTOR 0Ω,1/10W
Q3001		2SD1819A/QRS/-X	TRANSISTOR	D201		NRSA02J-152X	MG RESISTOR 1.5kΩ,1/10W
		or 2SC4081/QRS/-X	TRANSISTOR	D202		NRSA02J-0R0X	MG RESISTOR 0Ω,1/10W
		or 2PC4081/R/-X	TRANSISTOR	D203		NRSA02J-0R0X	MG RESISTOR 0Ω,1/10W
Q3002		PTZ-NV16	PHOTO TRANSISTO	D2001		1SS133	DIODE
		or PTZ-NV16A	IC(PHOTO COUPLER)			or 1N4148M	DIODE
Q3003		PTZ-NV16	PHOTO TRANSISTO	D2201		11ES2	DIODE
		or PTZ-NV16A	IC(PHOTO COUPLER)			or 1A3G	DIODE
Q3004		2SD1819A/QRS/-X	TRANSISTOR	D2501		1SS355	DIODE
		or 2PC4081/R/-X	TRANSISTOR	D3001		LNB2301L01VI	LE DIODE
		or 2SC4081/QRS/-X	TRANSISTOR	D3002		1SS133	DIODE
Q3005		2SC1740S/QRS/-T	TRANSISTOR	D3003		RD39ES/B3/-T2	ZENER DIODE
		or 2SC3199/YG/-T	TRANSISTOR			or MTZJ39C	ZENER DIODE
Q3008		UN521E	TRANSISTOR	D3004		11E2-T5	DIODE
		or RN1309	TRANSISTOR	D3005		11E2-T5	DIODE
		or DTC144WU	TRANSISTOR	D3007		QUY153-050Y	IM BUS WIRE
		or PDTC144WU	TRANSISTOR	D3008		1SS355	DIODE
Q3501		2SD1819A/QRS/-X	TRANSISTOR	D3961		RB721Q-40-T2	SB DIODE
		or 2SC4081/QRS/-X	TRANSISTOR	D3965		RB721Q-40-T2	SB DIODE
		or 2PC4081/R/-X	TRANSISTOR	D4001		1SS355	DIODE
Q4001		UN5211	TRANSISTOR	D4002		1SS355	DIODE
		or RN1302	TRANSISTOR	D5001		S1WB/A/60-4102	BRIDGE DIODE
		or DTC114EU	TRANSISTOR			or S1WB(A)60F4072X	BRIDGE DIODE
		or PDTC114EU	TRANSISTOR			or S1WB/A/60-X	BRIDGE DIODE
Q5101		2SK2632-CB14	POWER MOS FET	D5101		AU01	FR DIODE
		or 2SK2632	POWER MOS FET			or ERA18-04-T2	FR DIODE
		or 2SK2129	POWER MOS FET			or 10ELS4	FR DIODE
		or 2SK2129-LT	POWER MOS FET			or 1SR153-400-T2	FR DIODE
Q5102		2SD2144S/UV/-T	TRANSISTOR	D5102		AU01	FR DIODE
Q5301		2SB1256	TRANSISTOR			or ERA18-04-T2	FR DIODE
Q5302		DTC114TU	TRANSISTOR			or 10ELS4	FR DIODE
		or PDTC114TU	TRANSISTOR			or 1SR153-400-T2	FR DIODE
		or RN1311	TRANSISTOR	D5103		1SS133	DIODE
		or UN5215	TRANSISTOR	D5105		1SS133	DIODE
Q5303		2SD2144S/UVW/-T	TRANSISTOR	D5201		AK04	DIODE
Q5304		2SD1450/ST/-T	TRANSISTOR			or 11EQS04	SB DIODE
		or 2SD1302/ST/-T	TRANSISTOR			or 1S4	SB DIODE
Q5305		UN5111	TRANSISTOR	D5203		AU01Z	FR DIODE
		or RN2302	TRANSISTOR			or PG104RS	FR DIODE
		or DTA114EU	TRANSISTOR			or 1SR153-400-T2	FR DIODE
		or PDA114EU	TRANSISTOR			or ERA18-02-T2	FR DIODE
Q5306		2SB1256	TRANSISTOR			or 10ELS2	FR DIODE
Q5310		UN5211	TRANSISTOR	D5204		AU01Z	FR DIODE
		or RN1302	TRANSISTOR			or ERA18-02-T2	FR DIODE
		or DTC114EU	TRANSISTOR			or PG104RS	FR DIODE
		or PDTC114EU	TRANSISTOR			or 10ELS2	FR DIODE
Q5311		2SA1576A/RS/-X	TRANSISTOR			or 1SR153-400-T2	FR DIODE
		or 2SB1218A/RS/-X	TRANSISTOR	D5205		AU01Z	FR DIODE
Q5312		2SA1745/6-7/-X	TRANSISTOR			or ERA18-02-T2	FR DIODE
Q6030		2SB1218A/RS/-X	TRANSISTOR			or 10ELS2	FR DIODE
Q6031		UN5211	TRANSISTOR			or PG104RS	FR DIODE
		or RN1302	TRANSISTOR			or 1SR153-400-T2	FR DIODE
		or PDTC114EU	TRANSISTOR	D5209		ERA18-02-T2	FR DIODE
		or DTC114EU	TRANSISTOR			or PG104RS	FR DIODE
Q6032		UN5211	TRANSISTOR			or 1SR153-400-T2	FR DIODE

#	△	REF No.	PART No.	PART NAME, DESCRIPTION	#	△	REF No.	PART No.	PART NAME, DESCRIPTION
			or 10ELS2	FR DIODE	R201		NRSA02J-0R0X	MG RESISTOR	0Ω,1/10W
D5210			AU01Z	FR DIODE	R202		NRSA02J-103X	MG RESISTOR	10kΩ,1/10W
			or ERA18-02-T2	FR DIODE	R208		NRSA02J-0R0X	MG RESISTOR	0Ω,1/10W
			or 1SR153-400-T2	FR DIODE	R209		NRSA02J-512X	MG RESISTOR	5.1kΩ,1/10W
			or 10ELS2	FR DIODE	R210		NRSA02J-182X	MG RESISTOR	1.8kΩ,1/10W
			or PG104RS	FR DIODE	R211		NRSA02J-562X	MG RESISTOR	5.6kΩ,1/10W
D5211			AU01Z	FR DIODE	R212		NRSA02J-331X	MG RESISTOR	330Ω,1/10W
			or ERA18-02-T2	FR DIODE	R213		NRSA02J-0R0X	MG RESISTOR	0Ω,1/10W
			or PG104RS	FR DIODE	R216		NRSA02J-103X	MG RESISTOR	10kΩ,1/10W
			or 10ELS2	FR DIODE	R218		NRSA02J-0R0X	MG RESISTOR	0Ω,1/10W
			or 1SR153-400-T2	FR DIODE	R224		NRSA02J-101X	MG RESISTOR	100Ω,1/10W
D5212			21DQ04	BARRIER DIODE	R225		NRSA02J-471X	MG RESISTOR	470Ω,1/10W
			or SB240-F26	SB DIODE	R2001		NRSA02J-103X	MG RESISTOR	10kΩ,1/10W
			or RK14LF-B2	BARRIER DIODE	R2002		NRSA02J-103X	MG RESISTOR	10kΩ,1/10W
D5301			MTZJ15A	ZENER DIODE	R2003		NRSA02J-682X	MG RESISTOR	6.8kΩ,1/10W
			or RD15ES/B1/-T2	ZENER DIODE	R2004		NRSA02J-224X	MG RESISTOR	220kΩ,1/10W
D5302			MTZJ6.8A	ZENER DIODE	R2005		NRSA02J-271X	MG RESISTOR	270Ω,1/10W
			or RD6.8ES/B1/-T2	ZENER DIODE	R2006		NRSA02J-273X	MG RESISTOR	27kΩ,1/10W
D5303			MTZJ27C	ZENER DIODE	R2007		NRSA02J-183X	MG RESISTOR	18kΩ,1/10W
			or RD27ES/B3/-T2	ZENER DIODE	R2009		NRSA02J-0R0X	MG RESISTOR	0Ω,1/10W
D5304			1SS133	DIODE	R2013		NRSA02J-332X	MG RESISTOR	3.3kΩ,1/10W
D5305			11E2-T5	DIODE	R2014		NRSA02J-153X	MG RESISTOR	15kΩ,1/10W
D5307			1SS133	DIODE	R2018		NRSA02J-472X	MG RESISTOR	4.7kΩ,1/10W
D5308			1SS133	DIODE	R2019		NRSA02J-472X	MG RESISTOR	4.7kΩ,1/10W
D5309			1SS133	DIODE	R2020		NRSA02J-0R0X	MG RESISTOR	0Ω,1/10W
D5311			RD5.1ES/B3/-T2	ZENER DIODE	R2053		NRSA02J-472X	MG RESISTOR	4.7kΩ,1/10W
			or MTZJ5.1C	ZENER DIODE	R2054		NRSA02J-153X	MG RESISTOR	15kΩ,1/10W
D6002			HZ30-2L-T2	ZENER DIODE	R2055		NRSA02J-3R3X	MG RESISTOR	3.3Ω,1/10W
			or HZ30-2LTD	Z DIODE (M)	R2056		NRSA02J-101X	MG RESISTOR	100Ω,1/10W
R1			NRSA02J-0R0X	MG RESISTOR	R2057		NRSA02J-473X	MG RESISTOR	47kΩ,1/10W
R2			NRSA02J-561X	MG RESISTOR	R2058		NRSA02J-183X	MG RESISTOR	18kΩ,1/10W
R3			NRSA02J-472X	MG RESISTOR	R2059		NRSA02J-473X	MG RESISTOR	47kΩ,1/10W
R4			NRSA02J-822X	MG RESISTOR	R2060		NRSA02J-183X	MG RESISTOR	18kΩ,1/10W
R5			NRSA02J-103X	MG RESISTOR	R2061		NRSA02J-273X	MG RESISTOR	27kΩ,1/10W
R6			NRSA02J-681X	MG RESISTOR	R2062		NRSA02J-3R3X	MG RESISTOR	3.3Ω,1/10W
R7			NRSA02J-472X	MG RESISTOR	R2063		QRE141J-151Y	RESISTOR	150Ω,1/4W
R10			NRSA02J-102X	MG RESISTOR	R2064		NRSA02J-473X	MG RESISTOR	47kΩ,1/10W
R11			NRSA02J-681X	MG RESISTOR	R2065		NRSA02J-183X	MG RESISTOR	18kΩ,1/10W
R13			NRSA02J-222X	MG RESISTOR	R2105		NRSA02J-471X	MG RESISTOR	470Ω,1/10W
R15			NRSA02J-0R0X	MG RESISTOR	R2151		NRSA02J-101X	MG RESISTOR	100Ω,1/10W
R16			NRSA02J-0R0X	MG RESISTOR	R2152		NRSA02J-472X	MG RESISTOR	4.7kΩ,1/10W
R23			NRSA02J-822X	MG RESISTOR	R2201		NRSA02J-473X	MG RESISTOR	47kΩ,1/10W
R24			NRVA02D-682X	CMF RESISTOR	R2202		NRSA02J-473X	MG RESISTOR	47kΩ,1/10W
R25			NRVA02D-152X	CMF RESISTOR	R2203		NRSA02J-682X	MG RESISTOR	6.8kΩ,1/10W
R52			NRSA02J-0R0X	MG RESISTOR	R2204		NRSA02J-682X	MG RESISTOR	6.8kΩ,1/10W
R56			NRSA02J-0R0X	MG RESISTOR	R2206		NRSA02J-273X	MG RESISTOR	27kΩ,1/10W
R57			NRSA02J-102X	MG RESISTOR	R2207		NRSA02J-473X	MG RESISTOR	47kΩ,1/10W
R60			NRSA02J-0R0X	MG RESISTOR	R2208		NRSA02J-473X	MG RESISTOR	47kΩ,1/10W
R62			NRSA02J-0R0X	MG RESISTOR	R2209		NRSA02J-273X	MG RESISTOR	27kΩ,1/10W
R68			NRSA02J-471X	MG RESISTOR	R2210		NRSA02J-473X	MG RESISTOR	47kΩ,1/10W
R69			NRSA02J-471X	MG RESISTOR	R2211		NRSA02J-473X	MG RESISTOR	47kΩ,1/10W
R120			NRSA02J-102X	MG RESISTOR	R2212		NRSA02J-104X	MG RESISTOR	100kΩ,1/10W
R121			NRSA02J-102X	MG RESISTOR	R2213		NRSA02J-682X	MG RESISTOR	6.8kΩ,1/10W
R123			NRSA02J-102X	MG RESISTOR	R2214		NRSA02J-682X	MG RESISTOR	6.8kΩ,1/10W
R124			NRSA02J-681X	MG RESISTOR	R2215		NRSA02J-104X	MG RESISTOR	100kΩ,1/10W
R137			NRSA02J-102X	MG RESISTOR	R2216		NRSA02J-682X	MG RESISTOR	6.8kΩ,1/10W
R158			NRSA02J-102X	MG RESISTOR	R2217		NRSA02J-682X	MG RESISTOR	6.8kΩ,1/10W
R170			NRSA02J-0R0X	MG RESISTOR	R2218		NRSA02J-560X	MG RESISTOR	56Ω,1/10W
R171			NRSA02J-222X	MG RESISTOR	R2219		NRSA02J-681X	MG RESISTOR	680Ω,1/10W
R190			NRSA02J-0R0X	MG RESISTOR	R2220		NRSA02J-272X	MG RESISTOR	2.7kΩ,1/10W
R197			NRSA02J-106X	MG RESISTOR	R2221		NRSA02J-272X	MG RESISTOR	2.7kΩ,1/10W

#	△ REF No.	PART No.	PART NAME, DESCRIPTION	#	△ REF No.	PART No.	PART NAME, DESCRIPTION
R2222		NRSA02J-681X	MG RESISTOR 680Ω,1/10W	R3036		NRSA02J-472X	MG RESISTOR 4.7kΩ,1/10W
R2223		NRSA02J-681X	MG RESISTOR 680Ω,1/10W	R3037		NRSA02J-102X	MG RESISTOR 1kΩ,1/10W
R2224		NRSA02J-272X	MG RESISTOR 2.7kΩ,1/10W	R3038		NRSA02J-152X	MG RESISTOR 1.5kΩ,1/10W
R2225		NRSA02J-101X	MG RESISTOR 100Ω,1/10W	R3039		NRSA02J-102X	MG RESISTOR 1kΩ,1/10W
R2226		NRSA02J-332X	MG RESISTOR 3.3kΩ,1/10W	R3040		NRSA02J-472X	MG RESISTOR 4.7kΩ,1/10W
R2227		NRSA02J-102X	MG RESISTOR 1kΩ,1/10W	R3041		NRSA02J-472X	MG RESISTOR 4.7kΩ,1/10W
R2228		NRSA02J-681X	MG RESISTOR 680Ω,1/10W	R3042		NRSA02J-472X	MG RESISTOR 4.7kΩ,1/10W
R2229		NRSA02J-681X	MG RESISTOR 680Ω,1/10W	R3044		NRSA02J-102X	MG RESISTOR 1kΩ,1/10W
R2230		NRSA02J-272X	MG RESISTOR 2.7kΩ,1/10W	R3046		NRSA02J-102X	MG RESISTOR 1kΩ,1/10W
R2231		NRSA02J-272X	MG RESISTOR 2.7kΩ,1/10W	R3047		NRSA02J-471X	MG RESISTOR 470Ω,1/10W
R2236		NRSA02J-472X	MG RESISTOR 4.7kΩ,1/10W	R3048		NRSA02J-471X	MG RESISTOR 470Ω,1/10W
R2237		NRSA02J-511X	MG RESISTOR 510Ω,1/10W	R3049		NRSA02J-331X	MG RESISTOR 330Ω,1/10W
R2239		NRSA02J-472X	MG RESISTOR 4.7kΩ,1/10W	R3050		NRSA02J-331X	MG RESISTOR 330Ω,1/10W
R2240		NRSA02J-511X	MG RESISTOR 510Ω,1/10W	R3051		NRSA02J-471X	MG RESISTOR 470Ω,1/10W
R2241		NRSA02J-103X	MG RESISTOR 10kΩ,1/10W	R3052		NRSA02J-471X	MG RESISTOR 470Ω,1/10W
R2242		NRSA02J-103X	MG RESISTOR 10kΩ,1/10W	R3053		NRSA02J-471X	MG RESISTOR 470Ω,1/10W
R2243		NRSA02J-102X	MG RESISTOR 1kΩ,1/10W	R3054		NRSA02J-472X	MG RESISTOR 4.7kΩ,1/10W
R2244		NRSA02J-560X	MG RESISTOR 56Ω,1/10W	R3055		NRSA02J-472X	MG RESISTOR 4.7kΩ,1/10W
R2251		NRSA02J-303X	MG RESISTOR 30kΩ,1/10W	R3056		NRSA02J-472X	MG RESISTOR 4.7kΩ,1/10W
R2252		NRSA02J-221X	MG RESISTOR 220Ω,1/10W	R3057		NRSA02J-102X	MG RESISTOR 1kΩ,1/10W
R2254		NRSA02J-472X	MG RESISTOR 4.7kΩ,1/10W	R3058		NRSA02J-102X	MG RESISTOR 1kΩ,1/10W
R2501		NRSA02J-222X	MG RESISTOR 2.2kΩ,1/10W	R3059		NRSA02J-102X	MG RESISTOR 1kΩ,1/10W
R2502		NRSA02J-472X	MG RESISTOR 4.7kΩ,1/10W	R3060		NRSA02J-471X	MG RESISTOR 470Ω,1/10W
R2503		NRSA02J-104X	MG RESISTOR 100kΩ,1/10W	R3061		NRSA02J-471X	MG RESISTOR 470Ω,1/10W
R2504		NRSA02J-472X	MG RESISTOR 4.7kΩ,1/10W	R3062		NRSA02J-103X	MG RESISTOR 10kΩ,1/10W
R2505		NRSA02J-105X	MG RESISTOR 1MΩ,1/10W	R3063		NRSA02J-472X	MG RESISTOR 4.7kΩ,1/10W
R2506		NRSA02J-473X	MG RESISTOR 47kΩ,1/10W	R3066		NRSA02J-472X	MG RESISTOR 4.7kΩ,1/10W
R2507		NRSA02J-102X	MG RESISTOR 1kΩ,1/10W	R3069		NRSA02J-101X	MG RESISTOR 100Ω,1/10W
R2508		NRSA02J-333X	MG RESISTOR 33kΩ,1/10W	R3071		NRSA02J-103X	MG RESISTOR 10kΩ,1/10W
R2509		NRSA02J-103X	MG RESISTOR 10kΩ,1/10W	R3072		NRSA02J-102X	MG RESISTOR 1kΩ,1/10W
R2510		NRSA02J-104X	MG RESISTOR 100kΩ,1/10W	R3073		NRSA02J-102X	MG RESISTOR 1kΩ,1/10W
R2511		NRSA02J-154X	MG RESISTOR 150kΩ,1/10W	R3074		NRSA02J-471X	MG RESISTOR 470Ω,1/10W
R2512		NRSA02J-102X	MG RESISTOR 1kΩ,1/10W	R3075		NRSA02J-471X	MG RESISTOR 470Ω,1/10W
R2513		NRSA02J-102X	MG RESISTOR 1kΩ,1/10W	R3076		NRSA02J-471X	MG RESISTOR 470Ω,1/10W
R2514		NRSA02J-472X	MG RESISTOR 4.7kΩ,1/10W	R3077		NRSA02J-102X	MG RESISTOR 1kΩ,1/10W
R2515		NRSA02J-0R0X	MG RESISTOR 0Ω,1/10W	R3078		NRSA02J-102X	MG RESISTOR 1kΩ,1/10W
R2519		NRSA02J-102X	MG RESISTOR 1kΩ,1/10W	R3079		NRSA02J-0R0X	MG RESISTOR 0Ω,1/10W
R2520		NRSA02J-101X	MG RESISTOR 100Ω,1/10W	R3080		NRSA02J-102X	MG RESISTOR 1kΩ,1/10W
R2521		NRSA02J-472X	MG RESISTOR 4.7kΩ,1/10W	R3081		NRSA02J-102X	MG RESISTOR 1kΩ,1/10W
R2522		NRSA02J-682X	MG RESISTOR 6.8kΩ,1/10W	R3083		NRSA02J-102X	MG RESISTOR 1kΩ,1/10W
R3011		NRSA02J-472X	MG RESISTOR 4.7kΩ,1/10W	R3085		NRSA02J-102X	MG RESISTOR 1kΩ,1/10W
R3012		NRSA02J-472X	MG RESISTOR 4.7kΩ,1/10W	R3086		NRSA02J-102X	MG RESISTOR 1kΩ,1/10W
R3013		NRSA02J-472X	MG RESISTOR 4.7kΩ,1/10W	R3087		NRSA02J-102X	MG RESISTOR 1kΩ,1/10W
R3014		NRSA02J-472X	MG RESISTOR 4.7kΩ,1/10W	R3088		NRSA02J-221X	MG RESISTOR 220Ω,1/10W
R3015		NRSA02J-472X	MG RESISTOR 4.7kΩ,1/10W	R3089		NRSA02J-102X	MG RESISTOR 1kΩ,1/10W
R3016		NRSA02J-472X	MG RESISTOR 4.7kΩ,1/10W	R3090		NRSA02J-102X	MG RESISTOR 1kΩ,1/10W
R3017		NRSA02J-472X	MG RESISTOR 4.7kΩ,1/10W	R3091		NRSA02J-102X	MG RESISTOR 1kΩ,1/10W
R3018		NRSA02J-682X	MG RESISTOR 6.8kΩ,1/10W	R3092		NRSA02J-472X	MG RESISTOR 4.7kΩ,1/10W
R3019		NRSA02J-472X	MG RESISTOR 4.7kΩ,1/10W	R3093		NRSA02J-102X	MG RESISTOR 1kΩ,1/10W
R3020		NRSA02J-472X	MG RESISTOR 4.7kΩ,1/10W	R3094		NRSA02J-472X	MG RESISTOR 4.7kΩ,1/10W
R3021		NRSA02J-472X	MG RESISTOR 4.7kΩ,1/10W	R3095		NRSA02J-472X	MG RESISTOR 4.7kΩ,1/10W
R3022		NRSA02J-472X	MG RESISTOR 4.7kΩ,1/10W	R3096		NRSA02J-102X	MG RESISTOR 1kΩ,1/10W
R3025		NRSA02J-472X	MG RESISTOR 4.7kΩ,1/10W	R3097		NRSA02J-472X	MG RESISTOR 4.7kΩ,1/10W
R3026		NRSA02J-472X	MG RESISTOR 4.7kΩ,1/10W	R3103		NRSA02J-102X	MG RESISTOR 1kΩ,1/10W
R3027		NRSA02J-472X	MG RESISTOR 4.7kΩ,1/10W	R3104		NRSA02J-472X	MG RESISTOR 4.7kΩ,1/10W
R3029		NRSA02J-472X	MG RESISTOR 4.7kΩ,1/10W	R3105		NRSA02J-102X	MG RESISTOR 1kΩ,1/10W
R3030		NRSA02J-472X	MG RESISTOR 4.7kΩ,1/10W	R3106		NRSA02J-102X	MG RESISTOR 1kΩ,1/10W
R3031		NRSA02J-102X	MG RESISTOR 1kΩ,1/10W	R3201		NRSA02J-103X	MG RESISTOR 10kΩ,1/10W
R3033		NRSA02J-102X	MG RESISTOR 1kΩ,1/10W	R3202		NRSA02J-472X	MG RESISTOR 4.7kΩ,1/10W
R3034		NRSA02J-102X	MG RESISTOR 1kΩ,1/10W	R3203		NRSA02J-103X	MG RESISTOR 10kΩ,1/10W
R3035		NRSA02J-472X	MG RESISTOR 4.7kΩ,1/10W	R3204		NRSA02J-222X	MG RESISTOR 2.2kΩ,1/10W

#	△	REF No.	PART No.	PART NAME, DESCRIPTION	#	△	REF No.	PART No.	PART NAME, DESCRIPTION	
R3205			QRE141J-181Y	RESISTOR	180Ω,1/4W	R3338		NRSA02J-102X	MG RESISTOR	1kΩ,1/10W
R3206			NRSA02J-183X	MG RESISTOR	18kΩ,1/10W	R3339		NRSA02J-102X	MG RESISTOR	1kΩ,1/10W
R3207			NRSA02J-183X	MG RESISTOR	18kΩ,1/10W	R3340		NRSA02J-102X	MG RESISTOR	1kΩ,1/10W
R3208			QRE141J-181Y	RESISTOR	180Ω,1/4W	R3341		NRSA02J-102X	MG RESISTOR	1kΩ,1/10W
R3209			QRE141J-273Y	RESISTOR	27kΩ,1/4W	R3342		NRSA02J-102X	MG RESISTOR	1kΩ,1/10W
R3210			NRSA02J-181X	MG RESISTOR	180Ω,1/10W	R3353		NRSA02J-472X	MG RESISTOR	4.7kΩ,1/10W
R3211			NRSA02J-273X	MG RESISTOR	27kΩ,1/10W	R3354		NRSA02J-472X	MG RESISTOR	4.7kΩ,1/10W
R3212			QRE141J-474Y	RESISTOR	470kΩ,1/4W	R3501		NRSA02J-153X	MG RESISTOR	15kΩ,1/10W
R3213			NRSA02J-334X	MG RESISTOR	330kΩ,1/10W	R3502		NRSA02J-272X	MG RESISTOR	2.7kΩ,1/10W
R3214			NRSA02J-103X	MG RESISTOR	10kΩ,1/10W	R3503		NRSA02J-153X	MG RESISTOR	15kΩ,1/10W
R3215			NRSA02J-103X	MG RESISTOR	10kΩ,1/10W	R3504		NRSA02J-223X	MG RESISTOR	22kΩ,1/10W
R3216			NRSA02J-103X	MG RESISTOR	10kΩ,1/10W	R3505		NRSA02J-562X	MG RESISTOR	5.6kΩ,1/10W
R3217			NRSA02J-562X	MG RESISTOR	5.6kΩ,1/10W	R3506		NRSA02J-123X	MG RESISTOR	12kΩ,1/10W
R3218			NRSA02J-472X	MG RESISTOR	4.7kΩ,1/10W	R3961		NRSA02J-472X	MG RESISTOR	4.7kΩ,1/10W
R3219			NRSA02J-472X	MG RESISTOR	4.7kΩ,1/10W	R3962		NRSA02J-103X	MG RESISTOR	10kΩ,1/10W
R3220			NRSA02J-104X	MG RESISTOR	100kΩ,1/10W	R4001		NRSA02J-472X	MG RESISTOR	4.7kΩ,1/10W
R3222			NRSA02J-472X	MG RESISTOR	4.7kΩ,1/10W	R4003		NRSA02J-561X	MG RESISTOR	560Ω,1/10W
R3223			NRSA02J-472X	MG RESISTOR	4.7kΩ,1/10W	R4004		NRSA02J-561X	MG RESISTOR	560Ω,1/10W
R3224			NRSA02J-472X	MG RESISTOR	4.7kΩ,1/10W	R4005		NRSA02J-562X	MG RESISTOR	5.6kΩ,1/10W
R3225			NRSA02J-103X	MG RESISTOR	10kΩ,1/10W	R4006		NRSA02J-0R0X	MG RESISTOR	0Ω,1/10W
R3229			NRSA02J-105X	MG RESISTOR	1MΩ,1/10W	R4007		NRSA02J-102X	MG RESISTOR	1kΩ,1/10W
R3230			NRSA02J-472X	MG RESISTOR	4.7kΩ,1/10W	R4008		NRSA02J-102X	MG RESISTOR	1kΩ,1/10W
R3231			NRSA02J-102X	MG RESISTOR	1kΩ,1/10W	R4009		NRSA02J-102X	MG RESISTOR	1kΩ,1/10W
R3233			NRSA02J-103X	MG RESISTOR	10kΩ,1/10W	R4010		NRSA02J-102X	MG RESISTOR	1kΩ,1/10W
R3234			NRSA02J-103X	MG RESISTOR	10kΩ,1/10W	R4011		NRSA02J-392X	MG RESISTOR	3.9kΩ,1/10W
R3235			NRSA02J-332X	MG RESISTOR	3.3kΩ,1/10W	R4012		NRSA02J-222X	MG RESISTOR	2.2kΩ,1/10W
R3236			NRSA02J-332X	MG RESISTOR	3.3kΩ,1/10W	R4013		NRSA02J-102X	MG RESISTOR	1kΩ,1/10W
R3237			NRSA02J-103X	MG RESISTOR	10kΩ,1/10W	R4014		NRSA02J-222X	MG RESISTOR	2.2kΩ,1/10W
R3238			NRSA02J-103X	MG RESISTOR	10kΩ,1/10W	R4015		NRSA02J-223X	MG RESISTOR	22kΩ,1/10W
R3239			NRSA02J-103X	MG RESISTOR	10kΩ,1/10W	R4016		NRSA02J-103X	MG RESISTOR	10kΩ,1/10W
R3240			NRSA02J-103X	MG RESISTOR	10kΩ,1/10W	R4017		NRSA02J-102X	MG RESISTOR	1kΩ,1/10W
R3241			NRSA02J-103X	MG RESISTOR	10kΩ,1/10W	R4018		NRSA02J-102X	MG RESISTOR	1kΩ,1/10W
R3242			NRSA02J-472X	MG RESISTOR	4.7kΩ,1/10W	R4019		NRSA02J-103X	MG RESISTOR	10kΩ,1/10W
R3244			NRSA02J-103X	MG RESISTOR	10kΩ,1/10W	R4020		NRSA02J-103X	MG RESISTOR	10kΩ,1/10W
R3251			NRSA02J-103X	MG RESISTOR	10kΩ,1/10W	R4021		NRSA02J-103X	MG RESISTOR	10kΩ,1/10W
R3304			NRSA02J-102X	MG RESISTOR	1kΩ,1/10W	R5101		QRE141J-334Y	RESISTOR	330kΩ,1/4W
R3305			NRSA02J-102X	MG RESISTOR	1kΩ,1/10W	R5102		QRE141J-334Y	RESISTOR	330kΩ,1/4W
R3306			NRSA02J-102X	MG RESISTOR	1kΩ,1/10W	R5103		QRE141J-683Y	RESISTOR	68kΩ,1/4W
R3307			NRSA02J-472X	MG RESISTOR	4.7kΩ,1/10W	R5104		QRG029J-154G	OMF RESISTOR	150kΩ,2W
R3308			NRSA02J-102X	MG RESISTOR	1kΩ,1/10W	R5106		QRT01DJ-R39X	MF RESISTOR	0.39Ω,1W
R3309			NRSA02J-102X	MG RESISTOR	1kΩ,1/10W	R5107		QRE121J-331Y	RESISTOR	330Ω,1/2W
R3311			NRSA02J-102X	MG RESISTOR	1kΩ,1/10W	R5108		QRE141J-222Y	RESISTOR	2.2kΩ,1/4W
R3312			NRSA02J-102X	MG RESISTOR	1kΩ,1/10W	R5109		NRSA02J-681X	MG RESISTOR	680Ω,1/10W
R3313			NRSA02J-471X	MG RESISTOR	470Ω,1/10W	R5110		NRSA02J-224X	MG RESISTOR	220kΩ,1/10W
R3314			NRSA02J-471X	MG RESISTOR	470Ω,1/10W	R5111		NRSA02J-821X	MG RESISTOR	820Ω,1/10W
R3316			NRSA02J-102X	MG RESISTOR	1kΩ,1/10W	R5112		NRSA02J-821X	MG RESISTOR	820Ω,1/10W
R3317			NRSA02J-102X	MG RESISTOR	1kΩ,1/10W	R5301		QRE141J-1R8Y	RESISTOR	1.8Ω,1/4W
R3318			NRSA02J-472X	MG RESISTOR	4.7kΩ,1/10W	R5302		NRSA02J-102X	MG RESISTOR	1kΩ,1/10W
R3319			NRSA02J-105X	MG RESISTOR	1MΩ,1/10W	R5303		NRSA02J-122X	MG RESISTOR	1.2kΩ,1/10W
R3323			NRSA02J-0R0X	MG RESISTOR	0Ω,1/10W	△ R5304		QRZ9005-221X	FUSI RESISTOR	220Ω,1/4W
R3324			NRSA02J-102X	MG RESISTOR	1kΩ,1/10W	R5305		QRE141J-471Y	RESISTOR	470Ω,1/4W
R3325			NRSA02J-102X	MG RESISTOR	1kΩ,1/10W	R5306		NRSA02J-333X	MG RESISTOR	33kΩ,1/10W
R3327			NRSA02J-102X	MG RESISTOR	1kΩ,1/10W	R5307		NRSA02J-102X	MG RESISTOR	1kΩ,1/10W
R3328			NRSA02J-102X	MG RESISTOR	1kΩ,1/10W	R5308		NRSA02J-472X	MG RESISTOR	4.7kΩ,1/10W
R3329			NRSA02J-102X	MG RESISTOR	1kΩ,1/10W	R5309		NRSA02J-222X	MG RESISTOR	2.2kΩ,1/10W
R3330			NRSA02J-102X	MG RESISTOR	1kΩ,1/10W	R5310		NRSA02J-472X	MG RESISTOR	4.7kΩ,1/10W
R3331			NRSA02J-102X	MG RESISTOR	1kΩ,1/10W	R5311		NRSA02J-222X	MG RESISTOR	2.2kΩ,1/10W
R3332			NRSA02J-102X	MG RESISTOR	1kΩ,1/10W	R5312		NRSA02J-472X	MG RESISTOR	4.7kΩ,1/10W
R3333			NRSA02J-102X	MG RESISTOR	1kΩ,1/10W	R5313		QRE141J-222Y	RESISTOR	2.2kΩ,1/4W
R3335			NRSA02J-102X	MG RESISTOR	1kΩ,1/10W	R5314		NRSA02J-222X	MG RESISTOR	2.2kΩ,1/10W
R3337			NRSA02J-102X	MG RESISTOR	1kΩ,1/10W	R5317		NRSA02J-273X	MG RESISTOR	27kΩ,1/10W

#	△ REF No.	PART No.	PART NAME, DESCRIPTION	#	△ REF No.	PART No.	PART NAME, DESCRIPTION
R5318		NRSA02J-273X	MG RESISTOR 27kΩ,1/10W	B5307		NRSA02J-0R0X	MG RESISTOR 0Ω,1/10W
R5319		QRE141J-511Y	RESISTOR 510Ω,1/4W	B6001		NRSA02J-0R0X	MG RESISTOR 0Ω,1/10W
R5320		NRSA02J-471X	MG RESISTOR 470Ω,1/10W	B6032		NRSA02J-0R0X	MG RESISTOR 0Ω,1/10W
R5321		NRSA02J-221X	MG RESISTOR 220Ω,1/10W	B6556		NRSA02J-0R0X	MG RESISTOR 0Ω,1/10W
R5322		NRSA02J-473X	MG RESISTOR 47kΩ,1/10W	B6558		NRSA02J-0R0X	MG RESISTOR 0Ω,1/10W
R5323		QRE141J-473Y	RESISTOR 47kΩ,1/4W	B6560		NRSA02J-0R0X	MG RESISTOR 0Ω,1/10W
R5324		QRE141J-102Y	RESISTOR 1kΩ,1/4W	B6562		NRSA02J-0R0X	MG RESISTOR 0Ω,1/10W
R5331		NRSA02J-0R0X	MG RESISTOR 0Ω,1/10W	B6564		NRSA02J-0R0X	MG RESISTOR 0Ω,1/10W
R6020		NRSA02J-0R0X	MG RESISTOR 0Ω,1/10W	B7504		NRSA02J-0R0X	MG RESISTOR 0Ω,1/10W
R6021		NRSA02J-0R0X	MG RESISTOR 0Ω,1/10W	B7505		NRSA02J-0R0X	MG RESISTOR 0Ω,1/10W
R6022		NRSA02J-0R0X	MG RESISTOR 0Ω,1/10W	C1		QEKJ1CM-106	E CAPACITOR 10μF,16V
R6023		NRSA02J-0R0X	MG RESISTOR 0Ω,1/10W	C3		NCB21HK-103X	CAPACITOR 0.01μF,50V
R6030		NRSA02J-102X	MG RESISTOR 1kΩ,1/10W	C5		NCB21HK-103X	CAPACITOR 0.01μF,50V
R6031		NRSA02J-271X	MG RESISTOR 270Ω,1/10W	C6		NCB21EK-104X	CAPACITOR 0.1μF,25V
R6032		NRSA02J-392X	MG RESISTOR 3.9kΩ,1/10W	C7		QETN1CM-107	E CAPACITOR 100μF,16V
R6033		NRSA02J-182X	MG RESISTOR 1.8kΩ,1/10W	C9		NCB21HK-103X	CAPACITOR 0.01μF,50V
R6050		NRSA02J-101X	MG RESISTOR 100Ω,1/10W	C11		NCB21HK-103X	CAPACITOR 0.01μF,50V
R6051		NRSA02J-101X	MG RESISTOR 100Ω,1/10W	C12		NCB21EK-473X	CAPACITOR 0.047μF,25V
R6052		NRSA02J-101X	MG RESISTOR 100Ω,1/10W	C13		QERF1HM-335	E CAPACITOR 3.3μF,50V
R6082		NRSA02J-103X	MG RESISTOR 10kΩ,1/10W	C14		NCB21EK-333X	CAPACITOR 0.033μF,25V
R6508		NRSA02J-0R0X	MG RESISTOR 0Ω,1/10W	C16		NCF21CZ-105X	CAPACITOR 1μF,16V
R6510		NRSA02J-0R0X	MG RESISTOR 0Ω,1/10W	C17		NCB21HK-103X	CAPACITOR 0.01μF,50V
R6553		QRE141J-0R0Y	RESISTOR 0Ω,1/4W	C20		QEKJ1HM-225	E CAPACITOR 2.2μF,50V
R6554		NRSA02J-0R0X	MG RESISTOR 0Ω,1/10W	C21		NCB21EK-104X	CAPACITOR 0.1μF,25V
R7530		NRSA02J-750X	MG RESISTOR 75Ω,1/10W	C23		NCB21HK-223X	CAPACITOR 0.022μF,50V
VR2251		QRE141J-0R0Y	RESISTOR 0Ω,1/4W	C24		NCB21CK-474X	CAPACITOR 0.47μF,16V
B4		NRSA02J-0R0X	MG RESISTOR 0Ω,1/10W	C25		NCB21CK-224X	CAPACITOR 0.22μF,16V
B14		NRSA02J-0R0X	MG RESISTOR 0Ω,1/10W	C27		NDC21HJ-101X	CAPACITOR 100pF,50V
B19		NRSA02J-0R0X	MG RESISTOR 0Ω,1/10W	C29		QEKJ1EM-475	E CAPACITOR 4.7μF,25V
B23		NCB21HK-103X	CAPACITOR 0.01μF,50V	C30		QEKJ1EM-475	E CAPACITOR 4.7μF,25V
B43		QUY160-200Y	IM BUS WIRE	C31		NCB21HK-223X	CAPACITOR 0.022μF,50V
B69		NRSA02J-0R0X	MG RESISTOR 0Ω,1/10W	C32		NCB21HK-103X	CAPACITOR 0.01μF,50V
B70		NRSA02J-0R0X	MG RESISTOR 0Ω,1/10W	C34		QFVF1HJ-104Z	F CAPACITOR 0.1μF,50V
B153		NRSA02J-0R0X	MG RESISTOR 0Ω,1/10W	C37		QEKJ1CM-476	E CAPACITOR 47μF,16V
B203		NRSA02J-471X	MG RESISTOR 470Ω,1/10W	C38		NCB21HK-103X	CAPACITOR 0.01μF,50V
B204		NRSA02J-471X	MG RESISTOR 470Ω,1/10W	C41		NCB21EK-104X	CAPACITOR 0.1μF,25V
B208		NRSA02J-0R0X	MG RESISTOR 0Ω,1/10W	C42		NCB21HK-103X	CAPACITOR 0.01μF,50V
B210		NRSA02J-0R0X	MG RESISTOR 0Ω,1/10W	C43		NCB21HK-103X	CAPACITOR 0.01μF,50V
B213		NRSA02J-0R0X	MG RESISTOR 0Ω,1/10W	C45		NCB21EK-104X	CAPACITOR 0.1μF,25V
B214		NRSA02J-0R0X	MG RESISTOR 0Ω,1/10W	C47		NCB21EK-104X	CAPACITOR 0.1μF,25V
B2201		NRSA02J-0R0X	MG RESISTOR 0Ω,1/10W	C48		QEKJ0JM-476	E CAPACITOR 47μF,6.3V
B2202		NRSA02J-0R0X	MG RESISTOR 0Ω,1/10W	C49		NDC21HJ-331X	CAPACITOR 330pF,50V
B2253		NRSA02J-0R0X	MG RESISTOR 0Ω,1/10W	C52		NCF21CZ-105X	CAPACITOR 1μF,16V
B2501		NRSA02J-0R0X	MG RESISTOR 0Ω,1/10W	C53		NCF21CZ-105X	CAPACITOR 1μF,16V
B3001		NRSA02J-0R0X	MG RESISTOR 0Ω,1/10W	C54		QEKJ1HM-225	E CAPACITOR 2.2μF,50V
B3002		NRSA02J-0R0X	MG RESISTOR 0Ω,1/10W	C55		QEKJ1CM-106	E CAPACITOR 10μF,16V
B3005		NRSA02J-0R0X	MG RESISTOR 0Ω,1/10W	C56		QEKJ1HM-335	E CAPACITOR 3.3μF,50V
B3006		NRSA02J-0R0X	MG RESISTOR 0Ω,1/10W	C57		NCB21EK-104X	CAPACITOR 0.1μF,25V
B3012		NRSA02J-0R0X	MG RESISTOR 0Ω,1/10W	C58		NCB21EK-104X	CAPACITOR 0.1μF,25V
B3018		NRSA02J-0R0X	MG RESISTOR 0Ω,1/10W	C59		NCB21EK-473X	CAPACITOR 0.047μF,25V
B3056		NRSA02J-0R0X	MG RESISTOR 0Ω,1/10W	C61		NDC21HJ-330X	CAPACITOR 33pF,50V
B3063		NRSA02J-0R0X	MG RESISTOR 0Ω,1/10W	C62		NCB21EK-104X	CAPACITOR 0.1μF,25V
B3083		NRSA02J-0R0X	MG RESISTOR 0Ω,1/10W	C63		NDC21HG-151X	CAPACITOR 150pF,50V
B3104		NRSA02J-0R0X	MG RESISTOR 0Ω,1/10W	C64		QEKJ0JM-227	E CAPACITOR 220μF,6.3V
B3106		NRSA02J-0R0X	MG RESISTOR 0Ω,1/10W	C65		NCB21EK-104X	CAPACITOR 0.1μF,25V
B3144		NRSA02J-0R0X	MG RESISTOR 0Ω,1/10W	C74		NRSA02J-0R0X	MG RESISTOR 0Ω,1/10W
B3158		NRSA02J-0R0X	MG RESISTOR 0Ω,1/10W	C81		NDC21HJ-150X	CAPACITOR 15pF,50V
B3181		NRSA02J-0R0X	MG RESISTOR 0Ω,1/10W	C82		NDC21HJ-150X	CAPACITOR 15pF,50V
B3189		NRSA02J-0R0X	MG RESISTOR 0Ω,1/10W	C83		NDC21HJ-150X	CAPACITOR 15pF,50V
B3190		NRSA02J-0R0X	MG RESISTOR 0Ω,1/10W	C84		NDC21HJ-150X	CAPACITOR 15pF,50V
B3340		NRSA02J-0R0X	MG RESISTOR 0Ω,1/10W	C85		NCB21EK-104X	CAPACITOR 0.1μF,25V

#	△	REF No.	PART No.	PART NAME, DESCRIPTION	#	△	REF No.	PART No.	PART NAME, DESCRIPTION
C86			QEKJ1CM-476	E CAPACITOR 47μF,16V	C2214		NCB21HK-103X	CAPACITOR	0.01μF,50V
C91			NCB21EK-104X	CAPACITOR 0.1μF,25V	C2215		QEKJ1CM-106	E CAPACITOR	10μF,16V
C98			NCF21CZ-105X	CAPACITOR 1μF,16V	C2216		QEKJ1HM-105	E CAPACITOR	1μF,50V
C107			NDC21HJ-5R0X	CAPACITOR 5pF,50V	C2217		QEKJ1HM-105	E CAPACITOR	1μF,50V
C134			NCB21EK-104X	CAPACITOR 0.1μF,25V	C2218		QEKJ1CM-106	E CAPACITOR	10μF,16V
C141			NCB21EK-104X	CAPACITOR 0.1μF,25V	C2219		QEKJ1CM-106	E CAPACITOR	10μF,16V
C150			QEKJ0JM-336	E CAPACITOR 33μF,6.3V	C2220		QEKJ1CM-476	E CAPACITOR	47μF,16V
C164			NCB21HK-103X	CAPACITOR 0.01μF,50V	C2221		QEKJ1CM-106	E CAPACITOR	10μF,16V
C165			NCB21HK-103X	CAPACITOR 0.01μF,50V	C2222		QEKJ1CM-226	E CAPACITOR	22μF,16V
C171			NCB21HK-103X	CAPACITOR 0.01μF,50V	C2225		QEKJ1HM-224	E CAPACITOR	0.22μF,50V
C201			QEKJ0JM-227	E CAPACITOR 220μF,6.3V	C2226		QEKJ1CM-106	E CAPACITOR	10μF,16V
C204			NDC21HJ-100X	CAPACITOR 10pF,50V	C2227		QEKJ1CM-106	E CAPACITOR	10μF,16V
C206			NDC21HJ-330X	CAPACITOR 33pF,50V	C2230		NCB21CK-473X	CAPACITOR	0.047μF,16V
C207			NDC21HJ-330X	CAPACITOR 33pF,50V	C2231		NCB21HK-153X	CAPACITOR	0.015μF,50V
C209			NCB21CK-474X	CAPACITOR 0.47μF,16V	C2232		QEKJ1HM-224	E CAPACITOR	0.22μF,50V
C212			NCB21EK-104X	CAPACITOR 0.1μF,25V	C2233		NCB21HK-153X	CAPACITOR	0.015μF,50V
C213			QEKJ1EM-475	E CAPACITOR 4.7μF,25V	C2234		NCB21CK-473X	CAPACITOR	0.047μF,16V
C214			NCB21CK-224X	CAPACITOR 0.22μF,16V	C2251		NCB21EK-104X	CAPACITOR	0.1μF,25V
C215			NCB21CK-224X	CAPACITOR 0.22μF,16V	C2252		NCB21HK-222X	CAPACITOR	0.0022μF,50V
C216			QEKJ0JM-227	E CAPACITOR 220μF,6.3V	C2253		NCB21HK-222X	CAPACITOR	0.0022μF,50V
C217			NDC21HJ-560X	CAPACITOR 56pF,50V	C2256		NCF21EZ-104X	CAPACITOR	0.1μF,25V
C218			NCB21AK-105X	CAPACITOR 1μF,10V	C2257		QERF0JM-476	E CAPACITOR	47μF,6.3V
C222			NCB21AK-105X	CAPACITOR 1μF,10V	C2258		NCB21EK-104X	CAPACITOR	0.1μF,25V
C2002			QEKJ1CM-476	E CAPACITOR 47μF,16V	C2259		NCB21EK-104X	CAPACITOR	0.1μF,25V
C2003			NCB21HK-123X	CAPACITOR 0.012μF,50V	C2260		NDC21HJ-181X	CAPACITOR	180pF,50V
C2004			QEKJ1CM-226	E CAPACITOR 22μF,16V	C2261		NCB21HK-103X	CAPACITOR	0.01μF,50V
C2005			NCB21HK-102X	CAPACITOR 0.001μF,50V	C2501		QEKJ0JM-107	E CAPACITOR	100μF,6.3V
C2006			NCB21HK-331X	CAPACITOR 330pF,50V	C2502		NCB21HK-562X	CAPACITOR	0.0056μF,50V
C2007			QEKJ1CM-106	E CAPACITOR 10μF,16V	C2503		QERF1HM-105	E CAPACITOR	1μF,50V
C2008			NCB21HK-152X	CAPACITOR 0.0015μF,50V	C2505		QEKJ0JM-107	E CAPACITOR	100μF,6.3V
C2009			QEKJ1EM-475	E CAPACITOR 4.7μF,25V	C2506		NCB21HK-103X	CAPACITOR	0.01μF,50V
C2010			QEKJ1EM-475	E CAPACITOR 4.7μF,25V	C2507		NBE20JM-226X	T CAPACITOR	22μF,6.3V
C2011			NCB21EK-333X	CAPACITOR 0.033μF,25V	C2508		NCB21HK-103X	CAPACITOR	0.01μF,50V
C2013			NCB21EK-333X	CAPACITOR 0.033μF,25V	C2509		NBE20JM-106X	T CAPACITOR	10μF,6.3V
C2015			QEKJ1CM-226	E CAPACITOR 22μF,16V	C2510		QEKJ1CM-476	E CAPACITOR	47μF,16V
C2016			QEKJ1EM-475	E CAPACITOR 4.7μF,25V	C2511		NCB21HK-222X	CAPACITOR	0.0022μF,50V
C2051			NCB21HK-331X	CAPACITOR 330pF,50V	C2512		NDC21HJ-331X	CAPACITOR	330pF,50V
C2052			QFLC1HJ-333Z	F CAPACITOR 0.033μF,50V	C2513		NCB21HK-103X	CAPACITOR	0.01μF,50V
C2053			NCB21HK-332X	CAPACITOR 0.0033μF,50V	C2518		NCB21HK-102X	CAPACITOR	0.001μF,50V
C2054			NCB21HK-103X	CAPACITOR 0.01μF,50V	C2519		NCB21HK-103X	CAPACITOR	0.01μF,50V
C2055			QEKJ1CM-106	E CAPACITOR 10μF,16V	C2520		NCB21HK-103X	CAPACITOR	0.01μF,50V
C2061			QFLC1HJ-333Z	F CAPACITOR 0.033μF,50V	C3002		NCB21HK-103X	CAPACITOR	0.01μF,50V
C2062			NCB21HK-332X	CAPACITOR 0.0033μF,50V	C3003		QEKJ1HM-106	E CAPACITOR	10μF,50V
C2063			NCB21HK-103X	CAPACITOR 0.01μF,50V	C3004		NCB21EK-104X	CAPACITOR	0.1μF,25V
C2064			QEKJ1CM-106	E CAPACITOR 10μF,16V	C3010		QEZ0244-229	EDL CAPACITOR	0.0022F,5.5V
C2101			QEKJ1EM-475	E CAPACITOR 4.7μF,25V	C3012		QEKJ0JM-107	E CAPACITOR	100μF,6.3V
C2102			QEKJ1CM-226	E CAPACITOR 22μF,16V	C3013		NCB21HK-103X	CAPACITOR	0.01μF,50V
C2151			NDC21HJ-101X	CAPACITOR 100pF,50V	C3014		NBE20JM-226X	T CAPACITOR	22μF,6.3V
C2152			NCB21HK-103X	CAPACITOR 0.01μF,50V	C3016		NCB21EK-104X	CAPACITOR	0.1μF,25V
C2201			QEKJ1HM-104	E CAPACITOR 0.1μF,50V	C3019		NDC21HJ-101X	CAPACITOR	100pF,50V
C2202			QEKJ1HM-104	E CAPACITOR 0.1μF,50V	C3020		NDC21HJ-101X	CAPACITOR	100pF,50V
C2204			QEKJ1CM-226	E CAPACITOR 22μF,16V	C3021		NDC21HJ-101X	CAPACITOR	100pF,50V
C2205			QEKJ1EM-475	E CAPACITOR 4.7μF,25V	C3022		NCB21EK-104X	CAPACITOR	0.1μF,25V
C2206			QEKJ1EM-475	E CAPACITOR 4.7μF,25V	C3023		NBE20JM-106X	T CAPACITOR	10μF,6.3V
C2207			QEKJ0JM-476	E CAPACITOR 47μF,6.3V	C3024		NDC21HJ-220X	CAPACITOR	22pF,50V
C2208			QEKJ1CM-106	E CAPACITOR 10μF,16V	C3025		QAT3725-300Z	TRIM CAPACITOR,TIMER CLOCK	
C2209			QEKJ1CM-106	E CAPACITOR 10μF,16V	C3026		NCB21HK-103X	CAPACITOR	0.01μF,50V
C2210			QEKJ1CM-106	E CAPACITOR 10μF,16V	C3027		NBE20JM-106X	T CAPACITOR	10μF,6.3V
C2211			QEKJ1CM-106	E CAPACITOR 10μF,16V	C3028		NDC21HJ-101X	CAPACITOR	100pF,50V
C2212			QEKJ0JM-476	E CAPACITOR 47μF,6.3V	C3029		NDC21HJ-101X	CAPACITOR	100pF,50V
C2213			QERF0JM-476	E CAPACITOR 47μF,6.3V	C3030		NBE20JM-226X	T CAPACITOR	22μF,6.3V

#	△ REF No.	PART No.	PART NAME, DESCRIPTION	#	△ REF No.	PART No.	PART NAME, DESCRIPTION
		C3031	NCB21EK-104X CAPACITOR 0.1μF,25V			C6007	QETN1AM-337 E CAPACITOR 330μF,10V
		C3032	NCB21EK-104X CAPACITOR 0.1μF,25V			C6008	NCB21HK-103X CAPACITOR 0.01μF,50V
		C3033	NCB21EK-104X CAPACITOR 0.1μF,25V			C6012	QEKJ1CM-476 E CAPACITOR 47μF,16V
		C3036	NDC21HJ-180X CAPACITOR 18pF,50V			C6013	NCB21HK-103X CAPACITOR 0.01μF,50V
		C3037	NDC21HJ-120X CAPACITOR 12pF,50V			C6014	NCB21HK-103X CAPACITOR 0.01μF,50V
		C3038	NDC21HJ-101X CAPACITOR 100pF,50V			C6016	NCB21HK-103X CAPACITOR 0.01μF,50V
		C3039	NDC21HJ-101X CAPACITOR 100pF,50V			C6020	NDC21HJ-101X CAPACITOR 100pF,50V
		C3040	NCF21CZ-105X CAPACITOR 1μF,16V			C6021	NDC21HJ-101X CAPACITOR 100pF,50V
		C3042	QETJ0JM-477 E CAPACITOR 470μF,6.3V			C6022	NDC21HJ-101X CAPACITOR 100pF,50V
		C3301	NBE20JM-226X T CAPACITOR 22μF,6.3V			C6032	NCB21HK-473X CAPACITOR 0.047μF,50V
		C3302	NCB21HK-103X CAPACITOR 0.01μF,50V			C6033	NRSA02J-0R0X MG RESISTOR 0Ω,1/10W
		C3304	NCB21HK-103X CAPACITOR 0.01μF,50V			C6037	QEKJ1HM-106 E CAPACITOR 10μF,50V
		C3501	NCB21HK-103X CAPACITOR 0.01μF,50V			C6055	NDC21HJ-220X CAPACITOR 22pF,50V
		C3502	QEKJ1EM-335 E CAPACITOR 3.3μF,25V			L1	QQL29BJ-100Z COIL 10μH
		C3503	NCB21EK-104X CAPACITOR 0.1μF,25V			L4	QQL29BJ-100Z COIL 10μH
		C3961	NCB21EK-104X CAPACITOR 0.1μF,25V			L5	QRE141J-332Y RESISTOR 3.3kΩ,1/4W
		C4001	NBE20JM-226X T CAPACITOR 22μF,6.3V			L7	QQL29BK-R22Z COIL 0.22μH
		C4002	NCB21EK-104X CAPACITOR 0.1μF,25V			L8	QQL29BJ-101Z COIL 100μH
		C4003	NCB21HK-102X CAPACITOR 0.001μF,50V			L9	QQL29BJ-100Z COIL 10μH
		C4004	NBE20JM-226X T CAPACITOR 22μF,6.3V			L16	QQL29BJ-100Z COIL 10μH
		C4005	NCB21HK-222X CAPACITOR 0.0022μF,50V			L18	QQR0967-001 COIL 12μH
		C4006	NBE40JM-476X T CAPACITOR 47μF,6.3V			L25	QQL29BJ-100Z COIL 10μH
		C4007	NCB21HK-561X CAPACITOR 560pF,50V			L108	QUY153-050Y IM BUS WIRE
		C4008	NCB21AK-105X CAPACITOR 1μF,10V			L201	QQL29BK-1R0Z COIL 1.0μH
		C4009	NCB21HK-563X CAPACITOR 0.056μF,50V			L202	QQL071J-330Y COIL 33μH
		C4010	NCB21EK-223X CAPACITOR 0.022μF,25V			L203	QQL071J-220Y COIL 22μH
		C4011	NCB21EK-104X CAPACITOR 0.1μF,25V			L204	QQL29BJ-100Z COIL 10μH
		C4012	NCB21EK-224X CAPACITOR 0.22μF,25V			L205	QUY153-050Y IM BUS WIRE
		C4013	NCB21HK-563X CAPACITOR 0.056μF,50V			L206	QQL071J-220Y COIL 22μH
		C4014	NDC21HJ-101X CAPACITOR 100pF,50V			L2001	QUY153-050Y IM BUS WIRE
		C4015	NCB21HJ-102X CAPACITOR 0.001μF,50V			L2201	QUY153-050Y IM BUS WIRE
△		C5001	QFZ9051-683 F CAPACITOR 0.068μF,250V			L2251	QQL29BJ-100Z COIL 10μH
△		C5002	QFZ9051-333 F CAPACITOR 0.033μF,250V			L2252	QQL29BJ-151Z COIL 150μH
△		C5005	QCZ9071-222 CAPACITOR 0.0022μF,250V			L2501	QQL29BJ-2R2Z COIL 2.2μH
		C5006	QEZO375-686 E CAPACITOR 68μF,400V			L3001	QUY153-050Y IM BUS WIRE
		C5101	QCZ0212-472 CAPACITOR 0.0047μF,1kV			L3501	QUY153-050Y IM BUS WIRE
		C5102	QCZ0302-330Z CAPACITOR 33pF,1kV			L5201	PELN1184 COIL 33μH
		C5104	QETN1HM-105 E CAPACITOR 1μF,50V			L5202	PELN1184 COIL 33μH
		C5105	QFN31HJ-183 F CAPACITOR 0.018μF,50V	△		L5301	QQL29BJ-101Z COIL 100μH
		C5106	QCBB1HJ-271 CAPACITOR 270pF,50V			L6001	QUY153-050Y IM BUS WIRE
		C5107	QFV91HJ-104 F CAPACITOR 0.1μF,50V			L6002	QQL29BJ-100Z COIL 10μH
		C5110	QCZ0302-330Z CAPACITOR 33pF,1kV			L6004	QQL29BJ-100Z COIL 10μH
		C5201	QEMU0JM-227 E CAPACITOR 220μF,6.3V			L6031	QQL29BK-1R0Z COIL 1.0μH
		C5202	QEMT1CM-827 E CAPACITOR 820μF,16V			L6032	QUY153-050Y IM BUS WIRE
		C5203	QEMT1AM-128 E CAPACITOR 1200μF,10V			LPF2501	PELN1137 LOW PASS FILTER
		C5204	QETN2AM-475 E CAPACITOR 4.7μF,100V			CF2501	QAX0399-001Z RESONATOR
		C5205	QETN1HM-106 E CAPACITOR 10μF,50V			CF3301	PU60440-2 RESONATOR
		C5206	QEMU1EM-187 E CAPACITOR 180μF,25V			LC2501	QQL29BJ-100Z COIL
		C5207	QETN1CM-227 E CAPACITOR 220μF,16V			X1	QAX0530-001 CRYSTAL RESONATOR
		C5208	QETN1AM-227 E CAPACITOR 220μF,10V			X3001	QAX0445-001 CRYSTAL RESONATOR
		C5301	QETM0JM-108 E CAPACITOR 1000μF,6.3V			X3002	QAX0527-001 CRYSTAL RESONATOR
		C5302	QETN1HM-106 E CAPACITOR 10μF,50V			K5101	QQR0678-001Z FERRITE BEAD
		C5303	QETN1CM-107 E CAPACITOR 100μF,16V			PC3001	GP3S123 IC(PHOTO SENSOR)
		C5304	QFLC1HJ-183Z F CAPACITOR 0.018μF,50V			PC3002	GP3S123 IC(PHOTO SENSOR)
		C5305	NCB21HK-103X CAPACITOR 0.01μF,50V	△		PC5101	PC123F2 PH COUPLER
		C5306	QETN1AM-107 E CAPACITOR 100μF,10V	△		PC5301	PS2501-1 PH COUPLER
		C5307	QETN1CM-226 E CAPACITOR 22μF,16V			T2051	PELN0860 OSC TRANSFORMER
		C5308	QETN1EM-476 E CAPACITOR 47μF,25V			T2052	PELN0861 OSC TRANSFORMER
		C5309	QETN1CM-107 E CAPACITOR 100μF,16V	△		T5001	QAS0033-001 SW TRANSFORMER
		C5310	QEKJ1HM-105 E CAPACITOR 1μF,50V	△		TU6001	QAU0107-002 TUNER
		C6006	NCB21HK-103X CAPACITOR 0.01μF,50V			ET1	PQ21623-1-5 EARTH PLATE(RF)

#	△	REF No.	PART No.	PART NAME, DESCRIPTION	#	△	REF No.	PART No.	PART NAME, DESCRIPTION
			ET2	LP40547-001E					EARTH PLATE
△		HS1	LP40090-001A						HEAT SINK,Q5101
		SD1	LP30563-001B						SHIELD CASE(PRE/REC)
		OT1	QYTDSF3010Z						SCREW,X2TERMINAL
		OT2	QYTDST3006Z						SCREW,Q5101
		FC5001	QNG0006-001Z						FUSE CLIP,F5001
		FC5002	QNG0006-001Z						FUSE CLIP,F5001
△		LF5001	PELN1204-01-01						LINE FILTER
△		LF5002	QQR0608-001						LINE FILTER
		CN1	QGF1028C1-11						FPC CONNECTOR,(1-11)U.DRUM
		CN2001	QGF1207C1-07						FPC CONNECTOR,(1-7)A/C HEAD
		CN2002	QGB2532J1-02						CONNECTOR,(1-2)FE HEAD
		CN3001	QGF1207C1-05						FPC CONNECTOR,(1-5)DRUM MDA
		CN3002	QGB2532J1-02						CONNECTOR,(1-2)L.MOTOR
		CN3003	QGB2015M2-08						CONNECTOR,(1-8)CAP.MOTOR
		CN3004	QGB2534J2-04						CONNECTOR,(1-4)R.ENCODER
		CN3011	QGF1207C1-14						FPC CONNECTOR,(1-14)FRONT
		CN3012	QGF1207C1-06						FPC CONNECTOR,(1-6)JOG
		CN3501	QGB2011L2-06						CONNECTOR,(1-6)DD MOTOR
△		CN5001	QGA7901C3-02						CONNECTOR,(1-2)AC IN
		CN7501	QGB2024K1-09S						CONNECTOR,(1-9)TERMINAL
		CN7502	QGB2024K1-10S						CONNECTOR,(1-10)TERMINAL
		CN7503	QGB2024K1-10S						CONNECTOR,(1-10)TERMINAL
		CN7504	QGF1207C1-05						CONNECTOR,(1-5)
		CP3501	QUY153-050Y						IM BUS WIRE
△		CP4001	ICP-N15						CIRCUIT PROTECTOR
△		CP5301	ICP-N38						CIRCUIT PROTECTOR
△		CP5302	ICP-N25						CIRCUIT PROTECTOR
		CP5303	QUY153-050Y						IM BUS WIRE
△		F5001	QMF51E2-2R0J1						FUSE T2.0A,AC250V